



MARE ISLAND
CONNOLLY STREET CORRIDOR CONCEPT
2021.07.21 COMMUNITY MEETING

SOUTHERN LAND
COMPANY

SASAKI





SASAKI

OPPORTUNITIES FOR MIXED USE AT MARE ISLAND

HISTORIC CORE NORTH

RESIDENTIAL

MAKER SPACES

ALDEN PARK

WALNUT AVENUE

HISTORIC CORE SOUTH

9TH STREET

S & C

A STREET

HISTORIC BUILDINGS

HISTORIC CORE NORTH

RAILROAD AVE.

HISTORIC BUILDINGS

DRYDOCKS

WATERFRONT

FERRY

NAPA RIVER

CONNOLLY STREET





CONNOLLY STREET CORRIDOR

Make a Place Authentic to Mare Island and the Bay Area

Outdoor events/programming

Capitalize on existing assets, water, ferry, historic buildings/sites, views, existing uses

Retail F&B and Entertainment

Improved streets

CONNOLLY STREET CORRIDOR CONCEPT

PARK & TRAILS

RESIDENTIAL

ALDEN PARK

CONNOLLY STREET

S & C
HISTORIC BUILDINGS

RETAIL
F&B
HOTEL
OFFICE

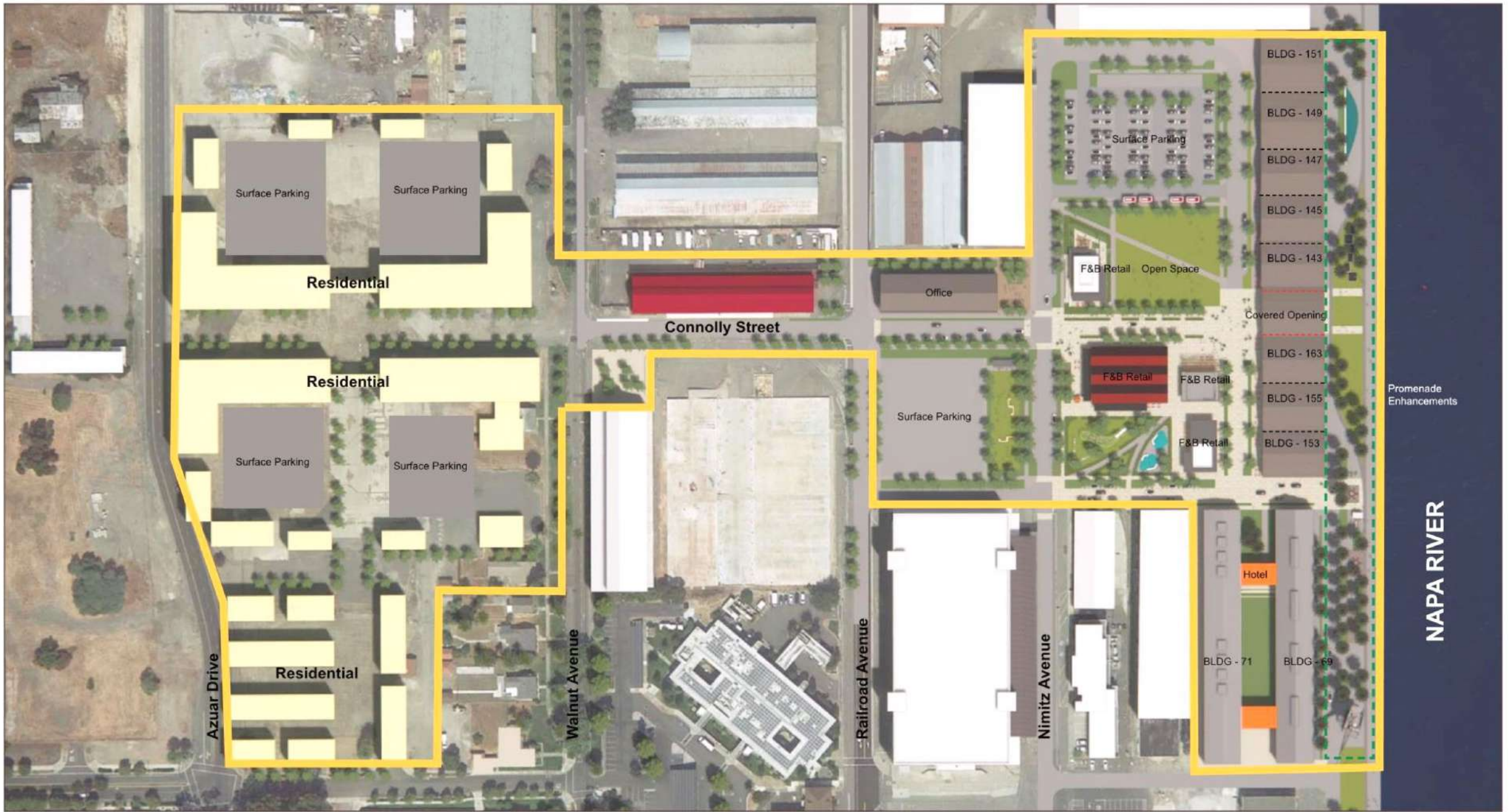
DRYDOCKS

FERRY

WATERFRONT

NAPA RIVER





NAPA RIVER





Napa River



What is missing in the Mare Island Historic Core?
A more connected network of streets and landscapes



Connolly Street View

Make a Place Authentic to Mare Island and the Bay Area



Significance: Originally built in 1898, the Oil House, Building 73, was constructed to store barrels of oil. The barrels were stacked on barrel racks four high and five and six barrels deep. The building was under the control of the Supply Department and was located approximately two blocks from the waterfront. It can only be surmised that since the Supply Department controlled the building was used to issue bulk lubricating oils to the shipyard and, quite possibly the fleet. Building 73 is a contributing element of the Mare Island Historic District, having fair historical integrity with approximately 50% of the original building remaining

Make a Place Authentic to Mare Island and the Bay Area



Significance: Building 77 is a contributing element of the Mare Island Historic District. It is significant as one of the least modified of the brick Classical Revival shops that were built in great numbers in the Shipyard North area of Mare Island. Unlike most of the older shops, such as Building 46 or Building 87, Building 77 was never expanded or incorporated into a larger complex. It illustrates as well as any other building at Mare Island the high quality of workmanship and design that went into these industrial buildings.



Napa River



Connolly Street as a Connector Corridor



F&B Retail / Retail



Plaza and Event Lawn



Lawn on D - Boston, MA

Plaza and Event Lawn



Lawn on D - Boston, MA

Plaza and Event Lawn



Lawn on D - Boston, MA

Concert / Live Music



Food Trucks



Children's Play



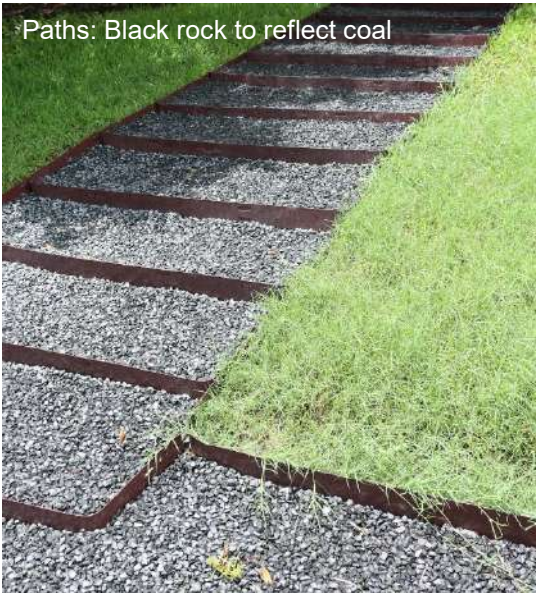
Dog Park



Fire Pits



Materiality Reflects the Coal Sheds



Expressing the Past with Railroad Tracks







Mare Island Celebrating the Regions Makers Through Art



Mare Island Celebrating the Regions Makers Through Art



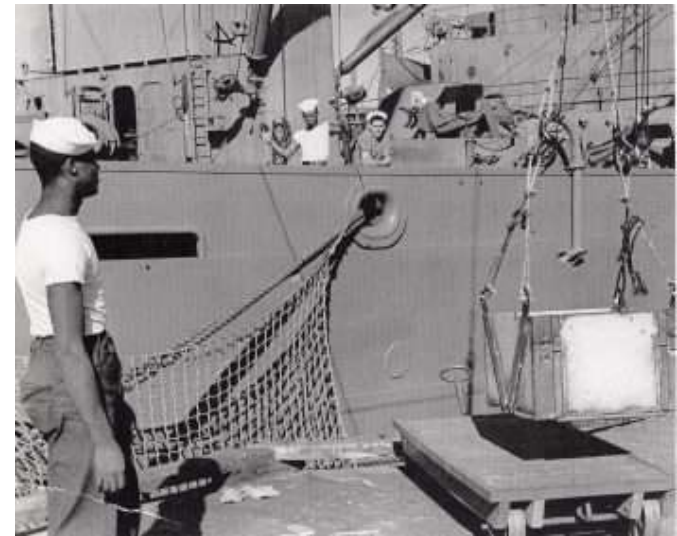
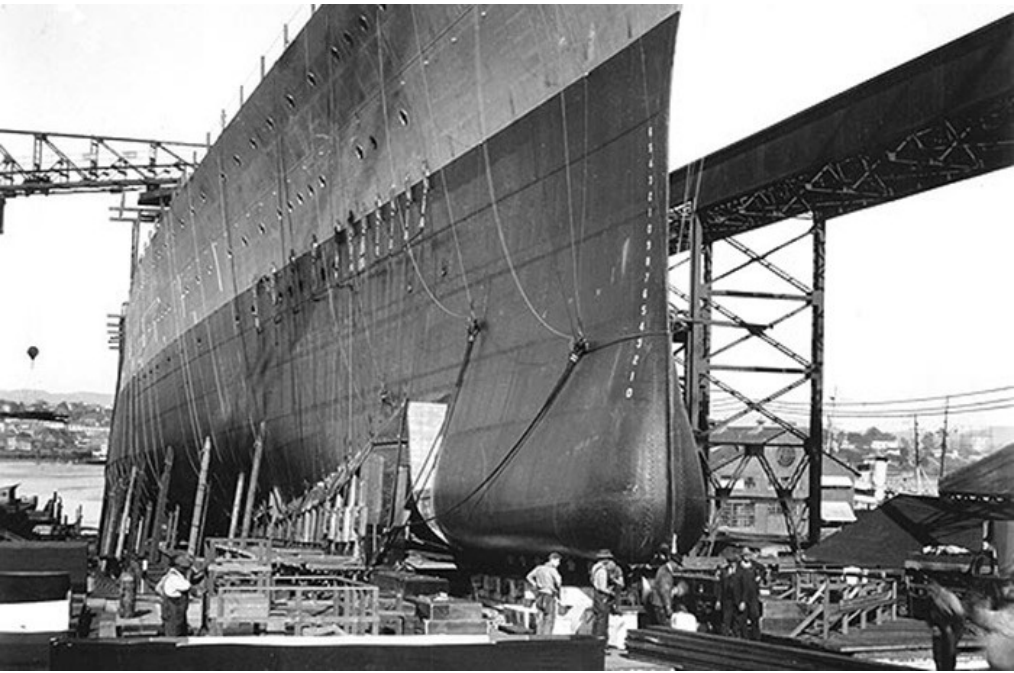








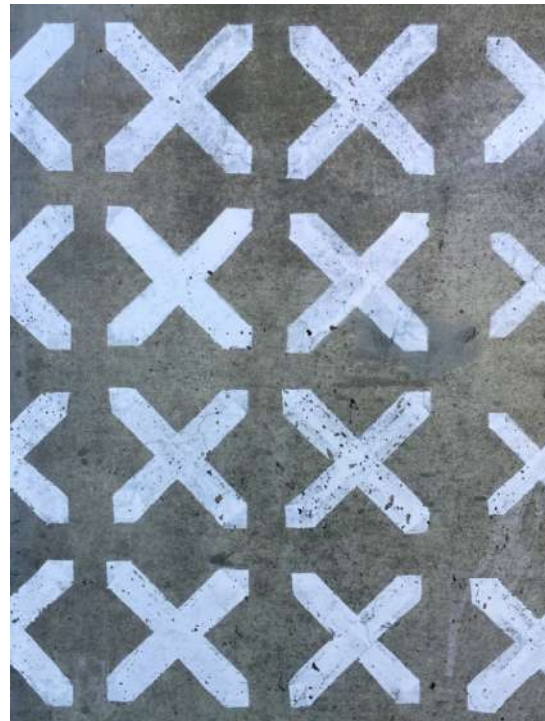
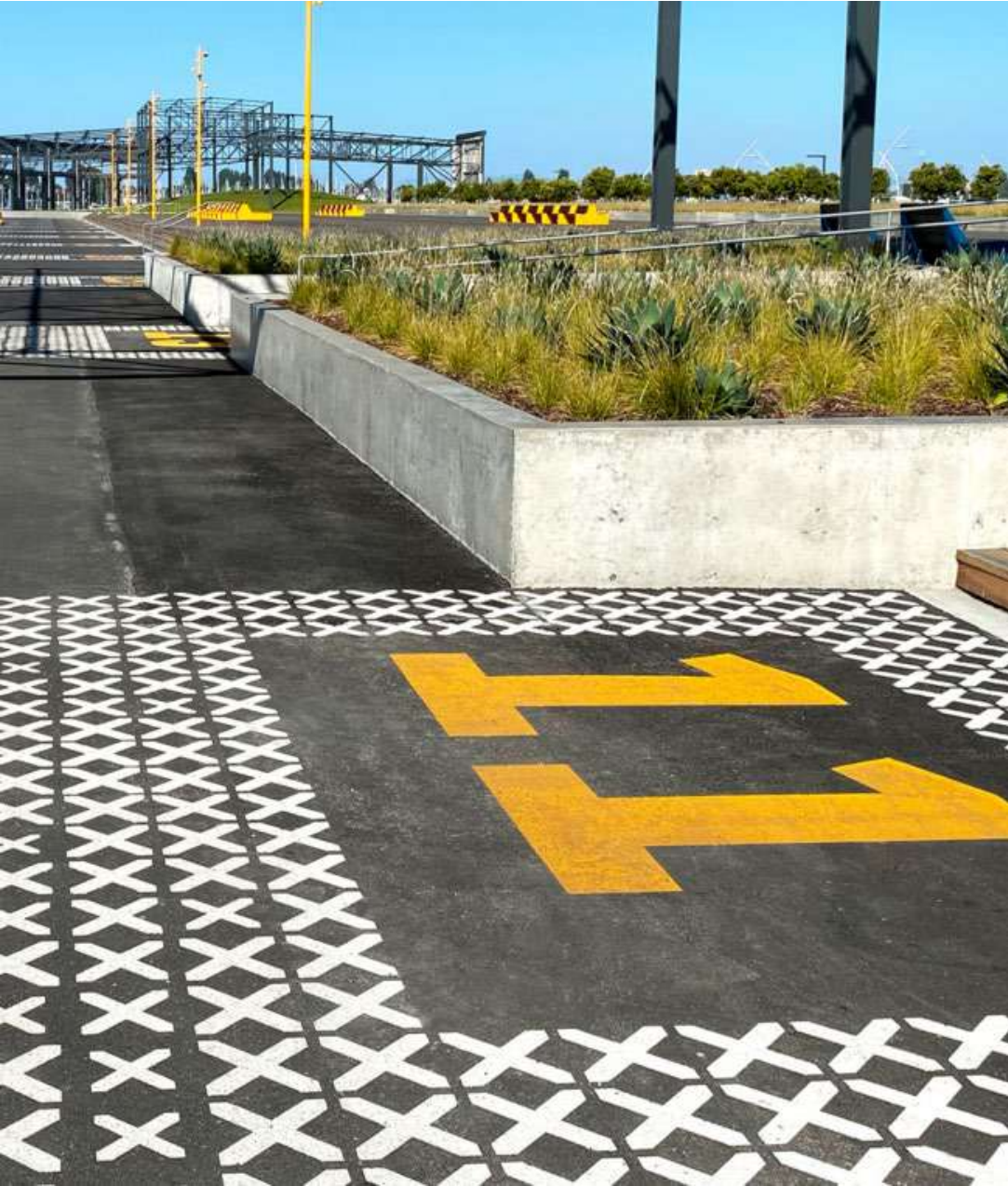
Future Parking







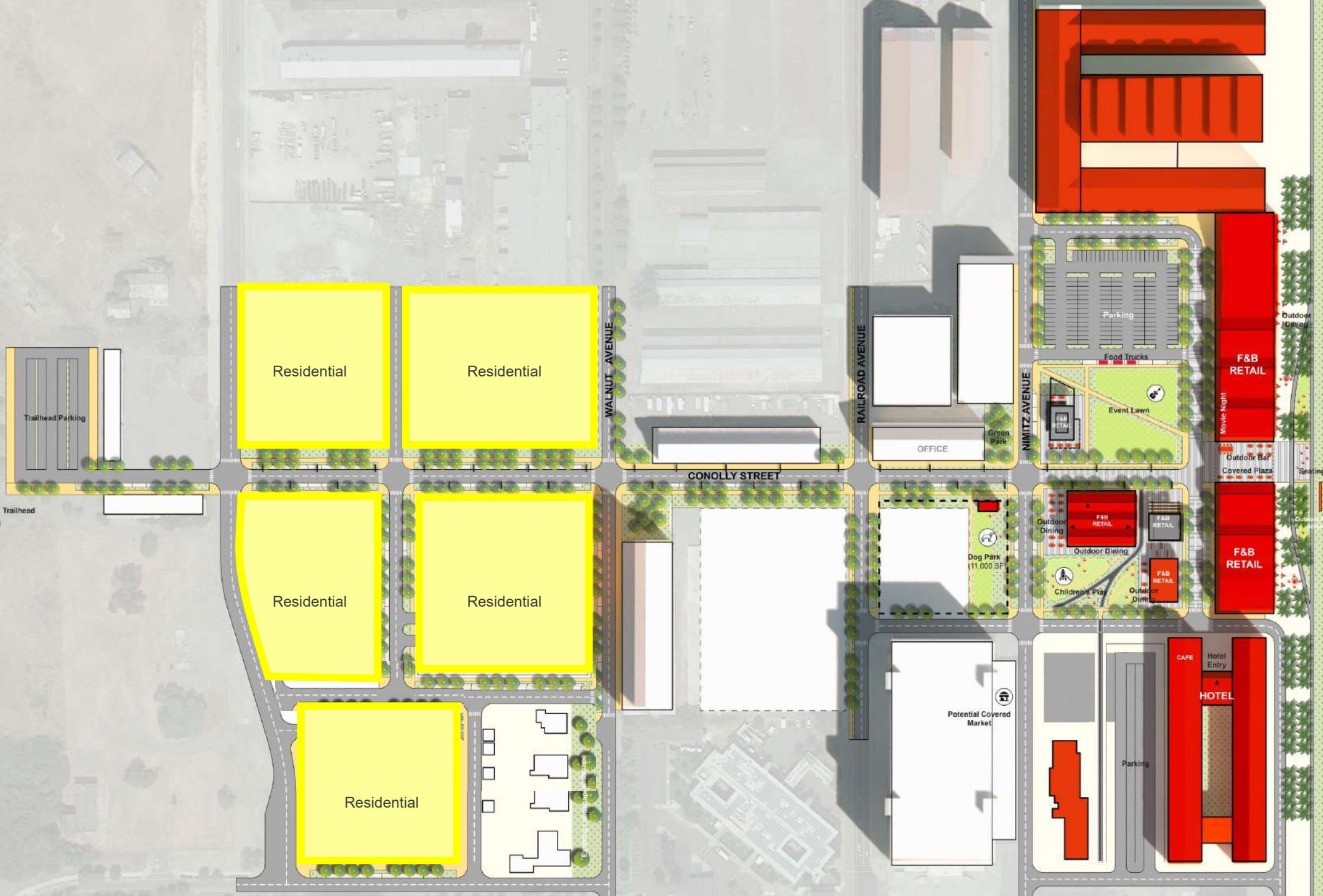








Residential Programming



Napa River



